

Sanitary Diaphragm Valve

Pneumatically Actuated

Description

The type 615 is an extremely compact pneumatically actuated valve with many features which make them ideal for pharmaceutical and bio-processing applications.

Standard Features

- Extremely compact design
- Sanitary internals
- Visual position indicator
- Maintenance-free piston actuator
- FDA compliant diaphragms
- Body material 316L stainless steel
- Triclamp®, O.D. Tubing, ISO, and DIN end connections
- Sizes 3/8" - 3/4"

Available Options

- Electrical limit and proximity switches
- Stroke limiter

Special connections

Hose barb, tube extensions, Swagelok®, Cajon VCR®, Ingold®, and others available upon request.

Fabrications

Cluster valve assemblies for horizontal and vertical orientations, Bottle Sampling, and custom fabrications upon request.

Materials

AL-6XN®, Hastelloy®, Titanium, and others available upon request.

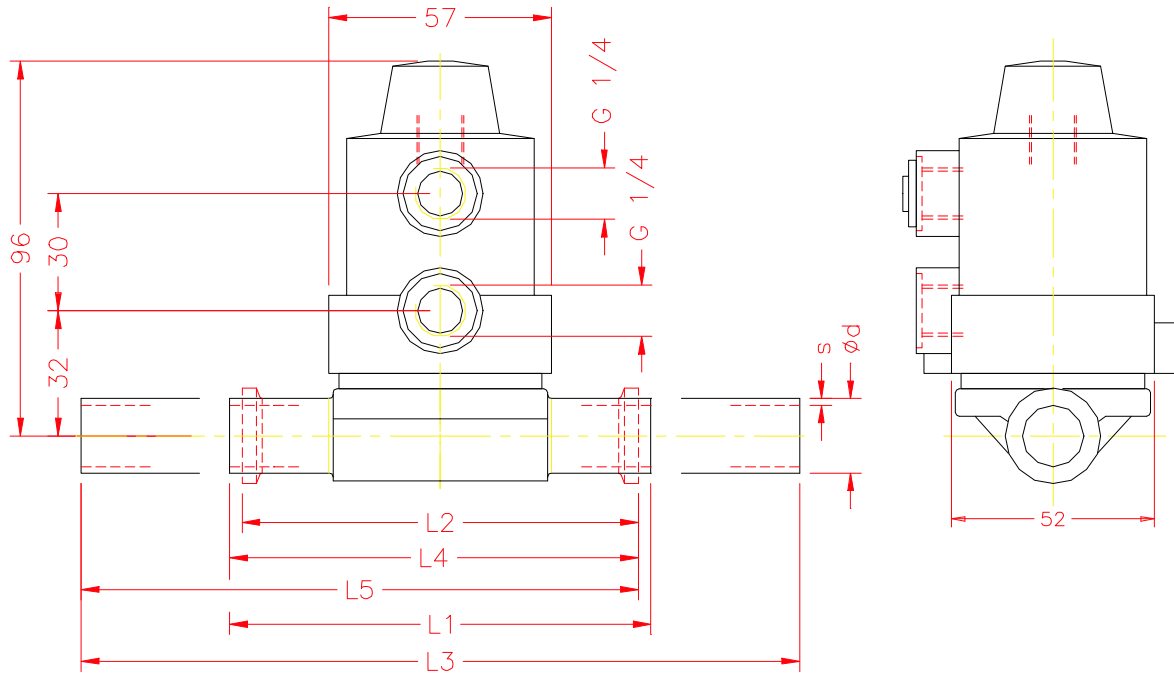
Typical Applications

- Pharmaceutical manufacturing
- Bioprocessing
- Cosmetic
- Brewery Service
- Food and Beverage
- Semiconductor
- High Purity Chemicals



Type 615

Type 615 Dimensional Data



Take Out Dimension For Standard Connections

Size	DN	Units	Con. Ref. No.		(59)	(05)	(94)	(93)	(95)
			Ød	s	L1	L2	L3	L4	L5
3/8	10	mm	9.53	1.25	108.00	88.90	184.20	98.45	136.55
		in	0.375	0.049	4.252	3.500	7.252	3.876	5.376
1/2	15	mm	12.70	1.65	108.00	88.90	184.20	98.45	136.55
		in	0.500	0.065	4.252	3.500	7.252	3.876	5.376
3/4	20	mm	19.05	1.65	108.00	101.60	184.20	104.80	142.90
		in	0.750	0.065	4.252	4.000	7.252	4.126	5.626

- L1 = Connection Code 59 = Standard butt-weld
- L2 = Connection Code 05 = Standard clamp
- L3 = Connection Code 94 = Standard butt-weld extension (AWF)
- L4 = Connection Code 93 = Standard clamp X butt-weld
- L5 = Connection Code 95 = Standard clamp X butt-weld extension (AWF)

Butt Weld Connections

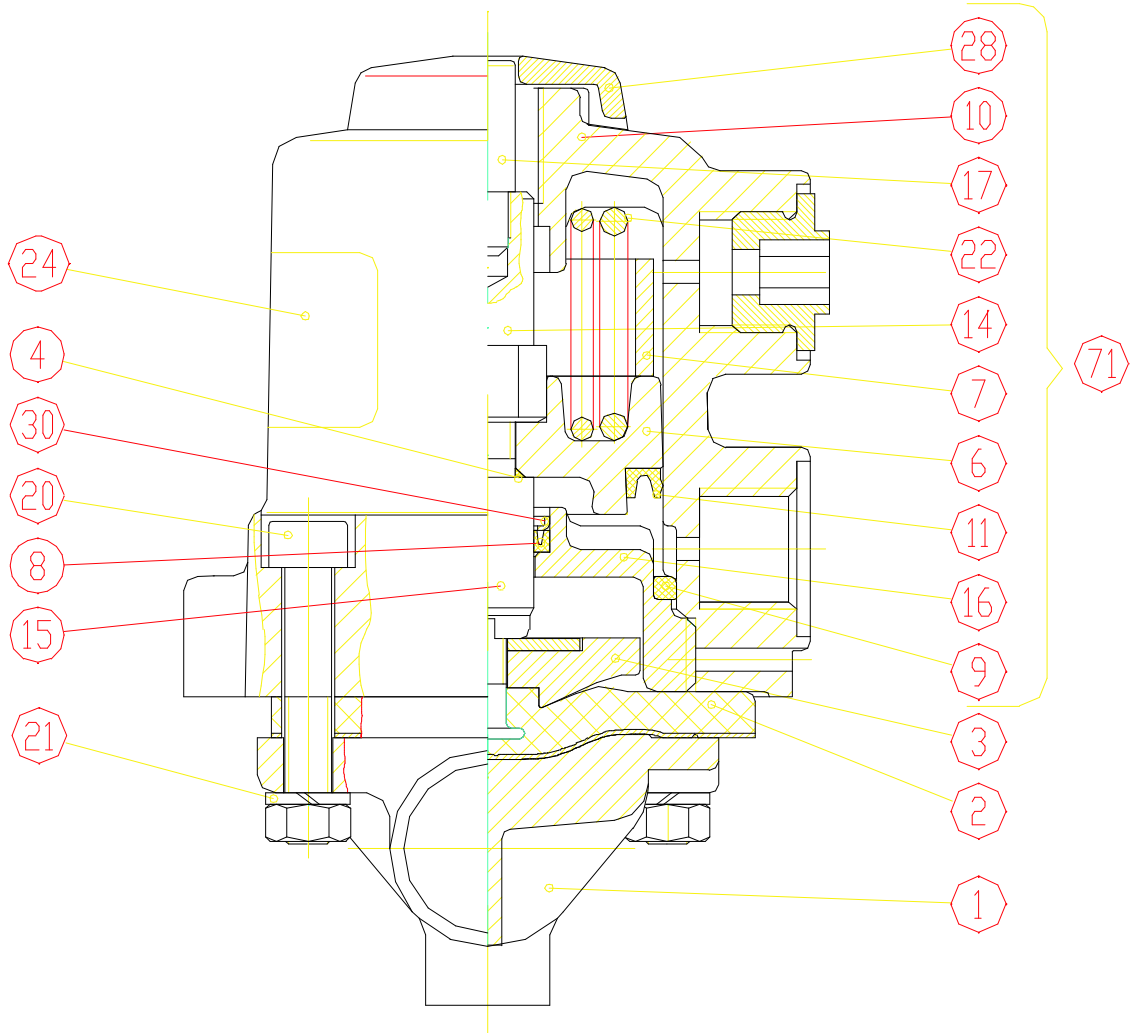
Connection Reference No.		DIN 0	DIN 11850 Series 1		DIN 11850 Series 2		DIN 11850 Series 3		ISO 60			
Size	DN	L ₁	s	Ød	s	Ød	s	Ød	s	Ød		
3/8"	10	108	-	-	1	12	1.5	13	2	14	1.6	17.2
1/2"	15	108	1.5	18	1	18	1.5	19	2	20	1.6	21.3

Drain Angles

Size	DN	Degrees
3/8"	10	60°
1/2"	15	65°
3/4"	20	70°

Drain angles are for BS O.D. tubing only.

Type 615 Spare Parts



ITEM	PART
1	Valve Body
2	Diaphragm
3	Compressor
4	O-Ring
6	Piston Assembly
6.2	Indicator Spindle
7	Distance Sleeve
8	Lip Ring
9	O-Ring
10	Actuator Housing
11	Lip Ring
14	Operating Spindle
15	Valve Spindle
16	Guide Piece
17	Indicator Spindle
20	Hexagon Socket Bolt
21	Washer
22, 26	Spring
28	Cap
29	Stroke Limiter (accessory)
30	Washer